

FOR SALE

25.2 +/- Acres

Will Divide

Robinson Real Estate, LLC. is proud to offer this 25.2 plus or minus acres for sale.

This property is located on Alabama Highway 43 at Owens Parkway.

It is located approximately 3/4 mile north on Highway 43 above the US 82 Us Highway 43 intersection.

Please call Robinson Real Estate, LLC.

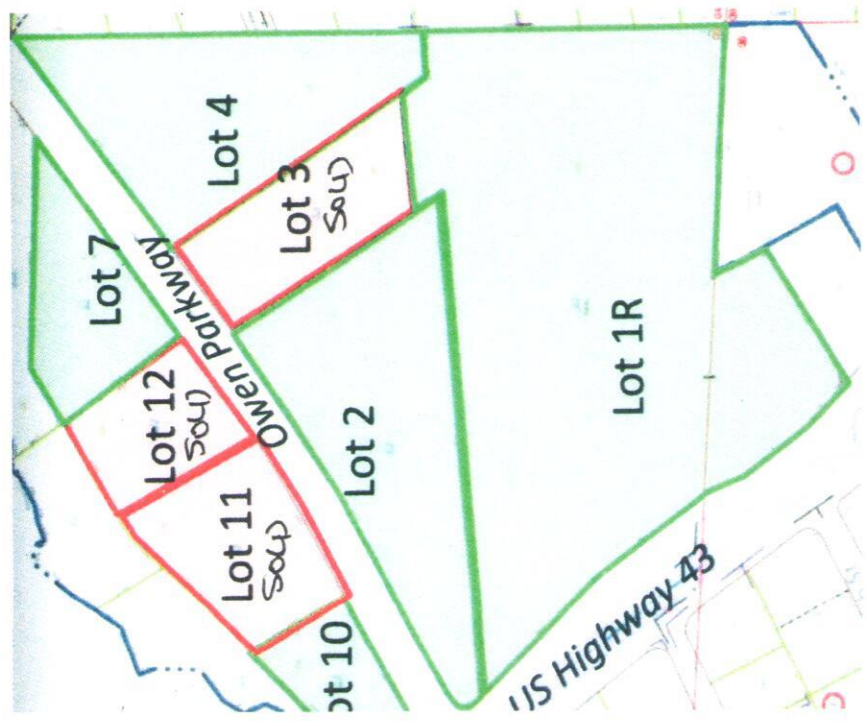
David Andress 205-799-8555

Leonard Robinson 205-792-4386

FOR SALE
25.2+/- ACRES
will divide

Robinson Real Estate, LLC

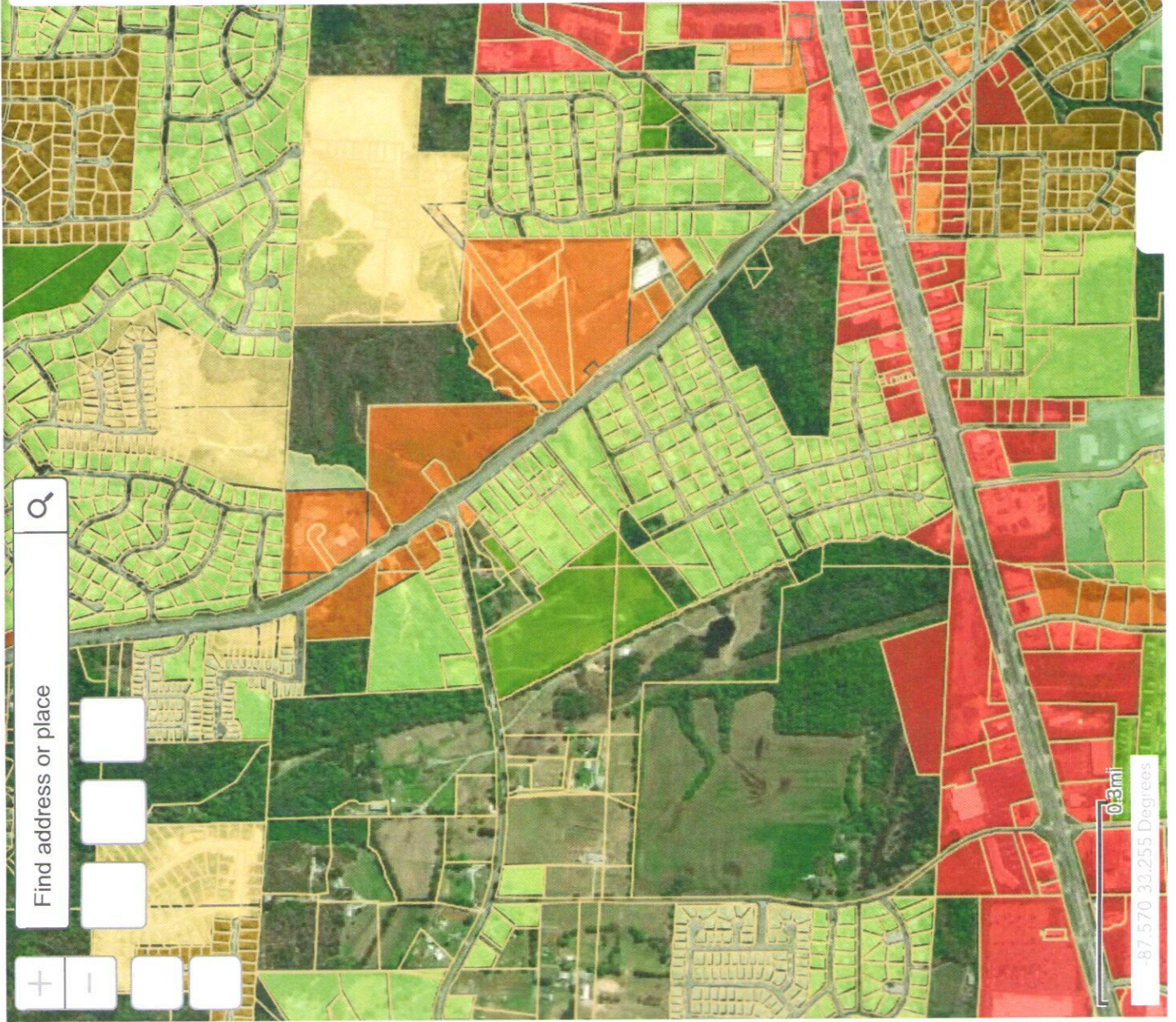
FOR INFORMATION PLEASE CALL
DAVID ANDRESS - 205-799-8555
LEONARD ROBINSON - 205-792-4386
www.robinsonrealestatellc.com





Northport Zoning Map-2022

with ArcGIS Web AppBuilder





















Legend

Tuscaloosa County Parcels



Northport_Zoning_Final

-  Agriculture
-  Bridge Avenue North
-  Bridge Avenue South
-  Conservation
-  Neighborhood Commercial
-  General Commercial
-  Commercial Highway
-  Historic Downtown Core
-  Historic Neighborhood
-  Light Industrial
-  Heavy Industrial
-  Multi-Family Housing
-  Mobile Home Park
-  Neighborhood Center
-  New Urban Neighborhood
-  Office and Institutional
-  Residential/Commercial/Institutional
-  River's Edge

0.3mi

-87.570 33.255 Degrees